

Welcome To

QPP
Live!



Quality
Insights

Quality Payment Program Support Center

Breaking News & Announcements



MIPS Submission Resources

- EIDM account needed! - [Enterprise Identity Management \(EIDM\)](#)
- [Guide for Obtaining an EIDM Account and 'Physician Quality and Value Programs' Role for Quality Payment Program \(QPP\) Submissions](#)
- [CMS MIPS Scoring Guide](#)
- Submitting 2017 MIPS Data Using the QPP Portal (webinar hosted by Quality Insights on 1.11.18)
 - The presentation slide deck and recording can be found [here](#)

Submission Videos

- [Merit-based Incentive Payment System \(MIPS\) Data Submission](#) (regular MIPS submission for individual or group)
- [Advancing Care Information \(ACI\) Data Submission for Alternative Payment Models \(APMs\)](#)
- [Data Submission via a Qualified Clinical Data Registry and Qualified Registry](#)



Upcoming Webinars

- **Year 2 of the Quality Payment Program**
 - February 6, 2018 - 1:00 p.m. ET [Register Here](#)
- **MIPS Data Submission Webinar: Practical Advice for Small Group Practices and Solo Practitioners**
 - January 23 at 11:00 a.m. ET - [Register Here](#) OR
 - January 25 at 3:30 p.m. ET - [Register Here](#)
- **The MIPS Annual Call for Measures and Activities**
 - February 5, 2018 - 2:30 to 3:30 p.m. ET - [Register Here](#)

January 2018 QPP-SURS Quality Payment Program Newsletter

- Articles include:
 - Cost Category: What to Expect in 2018 and Beyond
 - 2017 Transition Year FAQs
 - Newly Available MIPS Tools
- [Download](#) the January QPP Newsletter



Meet Our Quality Insights QPP Specialists



Kathy Wild
Project Director



Shanen Wright
Associate Project Director

Delaware

Louisiana

New Jersey



Cathy Browning
≥ 16 clinicians



Roxanne Fletcher
≤ 15 clinicians



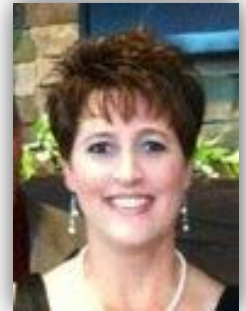
Lisa Sherman
≥ 16 clinicians



Maureen Kelsey
≥ 16 clinicians



Diana Haniak
≥ 16 clinicians



Amy Weiser
≤ 15 clinicians

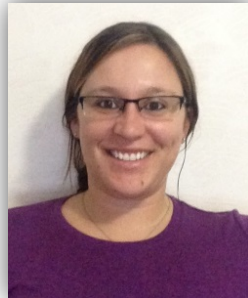
Email gpp-surs@tmf.org or call 844.317.7609
(practices with ≤15 MIPS clinicians)

Quality Insights QPP Specialists (cont.)

Pennsylvania



Matthew Armstrong
≤ 15 clinicians



Rebecca Dase
≥ 16 clinicians



Joe Pinto
≥ 16 clinicians

West Virginia



Julie Williams
≤ 15 clinicians



Debbie Hennen
≥ 16 clinicians



Lisa Sagwitz
≥ 16 clinicians



Shirley Sullivan
≤ 15 clinicians

Ask Questions Using Q&A

- On top right side of screen, click on “Q&A”
- Using the “Ask” dropdown menu, choose “**All Panelists**”
- Type in your question and then hit “**Send**”
- Your questions will be addressed in the order in which they are asked
- **Please note:** The **CHAT** feature will be used by the Quality Insights team to post resource links rather than for participants to submit questions.



Ask Questions Verbally

- Once all of the questions that were submitted electronically through the Q&A feature are addressed, we will open the phone lines for attendees to directly ask questions to our team over the phone
- To avoid confusion, the moderator will ask providers from each state if they have any questions - i.e. “Are there any providers from Delaware that have a question?”
- If you are not actively asking a question, **please mute your own phone line** in an effort to minimize background noise



Let's Begin!



Thank You for Joining Us

- **Quality Insights QPP Support Center**
 - For practices with **15 or fewer** eligible providers
 - Email: qpp-surs@qualityinsights.org
 - Phone: **877.497.5065**
 - Website: www.qppsupport.org
- **Quality Insights Quality Innovation Network (QIN)**
 - For practices with **16 or more** eligible providers
 - Email: kwild@qualityinsights.org
 - Phone: **877.987.4687, Ext. 108**
 - Website: www.qualityinsights-qin.org



This material was prepared by Quality Insights, the Quality Payment Program-Small Underserved and Rural Support Center for Delaware, New Jersey, Pennsylvania and West Virginia under contract with the Centers for Medicare & Medicaid Services (CMS), an agency of the U.S. Department of Health and Human Services. The contents presented do not necessarily reflect CMS policy. Publication number QPP- 011818