

Welcome To

QPP
Live!



Quality
Insights

Quality Payment Program Support Center

Breaking News & Announcements



MIPS Submission Deadlines

- Deadlines are fast approaching if you plan to submit data for the 2017 [Merit-based Incentive Payment System \(MIPS\)](#) performance period
- Don't wait until the last minute to submit your data - **submit early and often**
- **March 16 at 8:00 p.m. ET** - Deadline for 2017 data submission for groups reporting via the [CMS web interface](#)
- **March 31** - Deadline for 2017 data submission for all other [MIPS](#) reporting, including via [qpp.cms.gov](#)



Performance Scores for 2017 Claims Data Available on QPP Website

- If you're an eligible clinician (EC) who submitted 2017 Quality performance data for [MIPS](#) via claims, you'll now be able to view your performance scores through the MIPS [data submission feature](#)
- Claims data submission is only an option if you're [participating in MIPS](#) as an individual (not as part of a group)
- If you've already submitted quality data via claims, you don't have to take any additional action (unless you want to try to achieve a higher score via EHR reporting or your registry - we suggest you report ACI and IA, too, either way.)
- Claims-based quality measures are calculated automatically by CMS based on the G-codes submitted on your 2017 claims
 - Log in at qpp.cms.gov and view your calculated individual measures' scores and category score for Program Year 2017

Performance Scores for 2017 Claims Data Available on QPP Website (cont.)

- Scoring of claims data is subject to change monthly based on the processing of any additional 2017 claims and adjustments up to 90 days after the end of 2017
- It is possible that claims or adjustments that were submitted towards the end of 2017 have not yet processed - check back after **March 31, 2018**



MIPS Resources

- [QPP Data Submission Through the CMS Portal Guide](#) – developed by the New England QPP Support Center
- [MIPS Reporting Deadlines Fast Approaching: 10 Things to Do and Know](#)
- [Quality Payment Program Frequently Asked Questions](#) (3/5/2018)



EIDM Accounts

- For assistance with EIDM Accounts please call the CMS Service Center at **1.866.288.8292**
- Below are links to user guides for your reference:
 - [Enterprise Identity Data Management \(EIDM\) User Guide](#) (2/7/2018)
 - [Enterprise Identity Data Management \(EIDM\) ACO User Guide](#) (2/7/2018)

Upcoming Webinars

- March LAN Webinar: How to Prepare for MIPS Cost Sharing
 - March 20, 2018 at 11:00 a.m. ET - [Register Here](#)
 - March 22, 2018 at 7:00 p.m. ET - [Register Here](#)
 - Both sessions are the same; different times available for your convenience
- Quality Insights Webinar: 2018 QPP Reporting Requirements
 - Wednesday, March 21, 2018
 - 2:00 p.m. to 3:00 p.m.
 - [Register Here](#)

Meet Our Quality Insights QPP Specialists



Kathy Wild
Project Director



Shanen Wright
Associate Project Director

Delaware

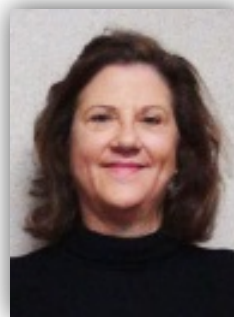


Cathy Browning
≥ 16 clinicians



Roxanne Fletcher
≤ 15 clinicians

Louisiana



Lisa Sherman
≥ 16 clinicians

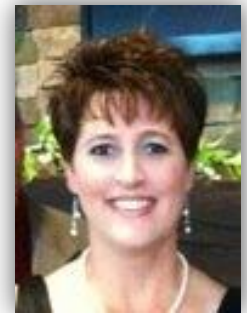


Maureen Kelsey
≥ 16 clinicians

New Jersey



Diana Haniak
≥ 16 clinicians



Amy Weiser
≤ 15 clinicians

Email gpp-surs@tmf.org or call 844.317.7609
(practices with ≤15 MIPS clinicians)

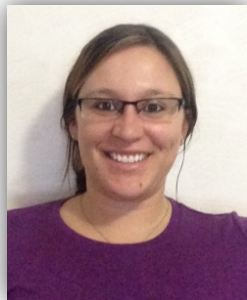
Quality Insights QPP Specialists (cont.)

Pennsylvania

West Virginia



Matthew Armstrong
≤ 15 clinicians



Rebecca Dase
≥ 16 clinicians



Joe Pinto
≥ 16 clinicians



Julie Williams
≤ 15 clinicians



Debbie Hennen
≥ 16 clinicians



Lisa Sagwitz
≥ 16 clinicians



Shirley Sullivan
≤ 15 clinicians

Ask Questions Using Q&A

- On top right side of screen, click on “Q&A”
- Using the “Ask” dropdown menu, choose “**All Panelists**”
- Type in your question and then hit “**Send**”
- Your questions will be addressed in the order in which they are asked
- **Please note:** The **CHAT** feature will be used by the Quality Insights team to post resource links rather than for participants to submit questions.



Ask Questions Verbally

- Once all of the questions that were submitted electronically through the Q&A feature are addressed, we will open the phone lines for attendees to directly ask questions to our team over the phone
- To avoid confusion, the moderator will ask providers from each state if they have any questions - i.e. “Are there any providers from Delaware that have a question?”
- If you are not actively asking a question, **please mute your own phone line** in an effort to minimize background noise



QPP *Live!*



Thank You for Joining Us

- **Quality Insights QPP Support Center**
 - For practices with **15 or fewer** eligible providers
 - Email: qpp-surs@qualityinsights.org
 - Phone: **877.497.5065**
 - Website: www.qppsupport.org
- **Quality Insights Quality Innovation Network (QIN)**
 - For practices with **16 or more** eligible providers
 - Email: kwild@qualityinsights.org
 - Phone: **877.987.4687, Ext. 108**
 - Website: www.qualityinsights-qin.org

